



**REGIONAL SPECIALISED METEOROLOGICAL CENTRE-TROPICAL CYCLONES, NEW DELHI  
TROPICAL WEATHER OUTLOOK**

**DEMS-RSMC TROPICAL CYCLONES NEW DELHI DATED 02.12.2024**

**TROPICAL WEATHER OUTLOOK FOR THE NORTH INDIAN OCEAN (THE BAY OF BENGAL AND THE ARABIAN SEA) VALID FOR THE NEXT 168 HOURS ISSUED AT 0600 UTC OF 02.12.2024 BASED ON 0300 UTC OF 02.12.2024.**

**BAY OF BENGAL:**

Yesterday's Depression over north coastal Tamil Nadu & Puducherry moved nearly westwards and weakened into a Well-Marked Low Pressure Area over North Interior Tamil Nadu at 0000 UTC of today, the 2nd December 2024.

The remnant Low-Pressure area is likely to move westwards and emerge into southeast and adjoining east-central Arabian Sea off north Kerala-Karnataka coasts around 3rd December 2024.

The system is being continuously monitored in view of its expected emergence into Arabian Sea.

Scattered low and medium clouds with embedded intense to very intense convection lay over central & southeast Bay of Bengal and south Andaman Sea (minimum CTT minus 70-85 Deg Cel). Scattered low and medium clouds with embedded moderate to intense convection lay over the north & southwest Bay of Bengal.

**\*PROBABILITY OF CYCLOGENESIS (FORMATION OF DEPRESSION) DURING NEXT 168 HRS:**

24 HOURS	24-48 HOURS	48-72 HOURS	72-96 HOURS	96-120 HOURS	120-144 HOURS	144-168 HOURS
NIL	NIL	NIL	NIL	NIL	NIL	NIL

**\*NOTE: EVERY 24HR FORECAST IS VALID UPTO 0300 UTC (0830 IST) OF NEXT DAY**

**ARABIAN SEA:**

The remnant Low-Pressure area is likely to move westwards and emerge into southeast and adjoining east-central Arabian Sea off north Kerala-Karnataka coasts around 3rd December 2024.

Scattered low and medium clouds with embedded intense to very intense convection lay over the southeast Arabian Sea off Karnataka Coast Lakshadweep Islands area (minimum CTT minus 70-80 Deg Cel). Scattered low and medium clouds with embedded isolated weak to moderate convection lay over the northwest & east-central Arabian Sea rest south Arabian Sea Maldives & Comorin Area.

**\*PROBABILITY OF CYCLOGENESIS (FORMATION OF DEPRESSION) DURING NEXT 168 HRS:**

24 HOURS	24-48 HOURS	48-72 HOURS	72-96 HOURS	96-120 HOURS	120-144 HOURS	144-168 HOURS
NIL	LOW	LOW	NIL	NIL	NIL	NIL

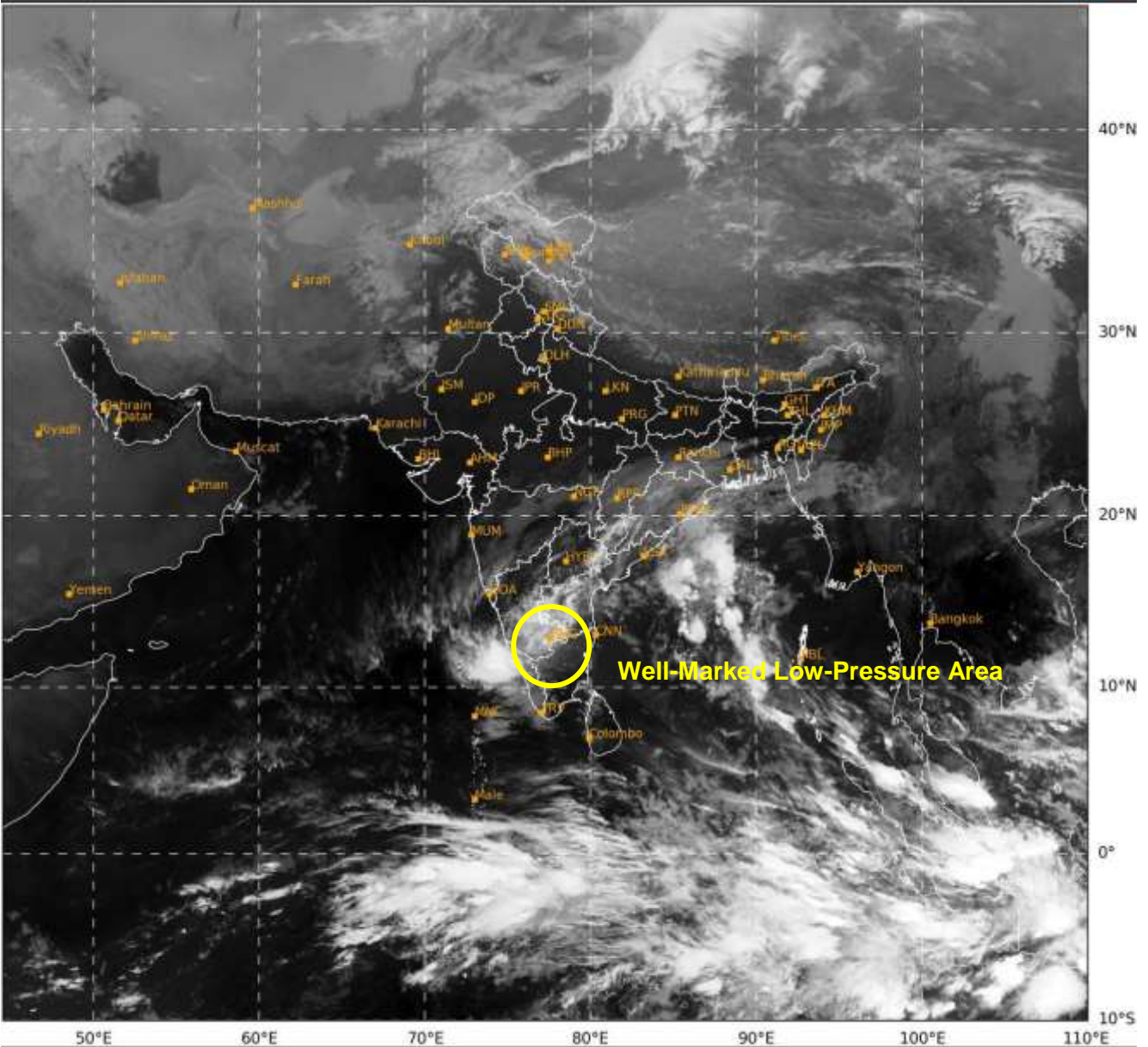
**\*NOTE: EVERY 24HR FORECAST IS VALID UPTO 0300 UTC (0830 IST) OF NEXT DAY**

Cloud distribution: (a) Isolated: <25%, Scattered:25-50%, Broken: 51-75%, Solid:>75%, Convection Intensity: (a) Weak: Cloud Top Temperature (CTT) >-25°C, (b) Moderate: CTT: - 25°C to -40°C, (c) Intense: CTT: - 41°C to -70°C and (d) Very Intense: : Less than -70°C  
PROBABILITY OF CYCLOGENESIS (FORMATION OF DEPRESSION):NIL: 0%, LOW: 1-33%, , MODERATE: 34-66% AND HIGH: 67-100%  
This is a guidance Bulletin for WMO/ESCAP Panel Member countries. Visit respective National websites for Country specific Bulletins

REMARKS: NIL.

SAT : INSAT-3DR IMG  
IMG\_TIR1 10.8 um  
LIC Mercator

02-12-2024/(0345 to 0412) GMT  
02-12-2024/(0915 to 0942) IST



443

952

IMD, DELHI

Cloud distribution: (a) Isolated: <25%, Scattered:25-50%, Broken: 51-75%, Solid:>75%, Convection Intensity: (a) Weak: Cloud Top Temperature (CTT) >-25°C, (b) Moderate: CTT: - 25°C to -40°C, (c) Intense: CTT: - 41°C to -70°C and (d) Very Intense: : Less than -70°C  
PROBABILITY OF CYCLOGENESIS (FORMATION OF DEPRESSION):NIL: 0%, LOW: 1-33%, , MODERATE: 34-66% AND HIGH: 67-100%  
This is a guidance Bulletin for WMO/ESCAP Panel Member countries. Visit respective National websites for Country specific Bulletins